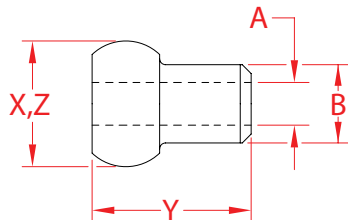


SINGLE SHANK BALL

316 STAINLESS STEEL



Import



Precision
Machined

ITEM	A (wire)	B BEFORE (swage)	B AFTER (swage)	BALL BEFORE (swage)	BALL AFTER (swage)	X (height)	Y (length)	Z (width)	WT (lb)	PACKAGING TYPE	EACH (qty)	INNER (qty)	CARTON (qty)	UPC
S0755-0001	1/16"	0.13"	0.11"	0.21"	0.19"	0.21"	0.27"	0.21"	0.01/100	POLYBAG	1	50	5,000	791506050759
S0755-0002	3/32"	0.17"	0.14"	0.28"	0.25"	0.28"	0.38"	0.28"	0.4/100	POLYBAG	1	50	5,000	791506050766
S0755-0003	1/8"	0.22"	0.19"	0.35"	0.32"	0.35"	0.50"	0.35"	0.6/100	POLYBAG	1	50	4,000	791506050773
S0755-0004	5/32"	0.26"	0.22"	0.42"	0.38"	0.42"	0.62"	0.42"	0.01	POLYBAG	1	50	4,000	791506050780
S0755-0005	3/16"	0.30"	0.26"	0.49"	0.44"	0.49"	0.73"	0.49"	0.01	POLYBAG	1	100	500	791506050797
S0755-0006	7/32"	0.35"	0.30"	0.56"	0.51"	0.56"	0.85"	0.56"	0.02	POLYBAG	1	100	500	791506050803
S0755-0007	1/4"	0.41"	0.35"	0.63"	0.57"	0.63"	0.96"	0.63"	0.03	POLYBAG	1	50	500	791506050810
S0755-0009	5/16"	0.48"	0.41"	0.77"	0.69"	0.77"	1.19"	0.77"	0.05	POLYBAG	1	25	200	791506050827
S0755-0010	3/8"	0.55"	0.48"	0.90"	0.82"	0.90"	1.44"	0.90"	0.09	POLYBAG	1	25	150	791506050834

NOTE:
ALL DIMENSIONS ARE NOMINAL (+/- 3%) AND ARE SUBJECT TO CHANGE WITHOUT NOTICE.